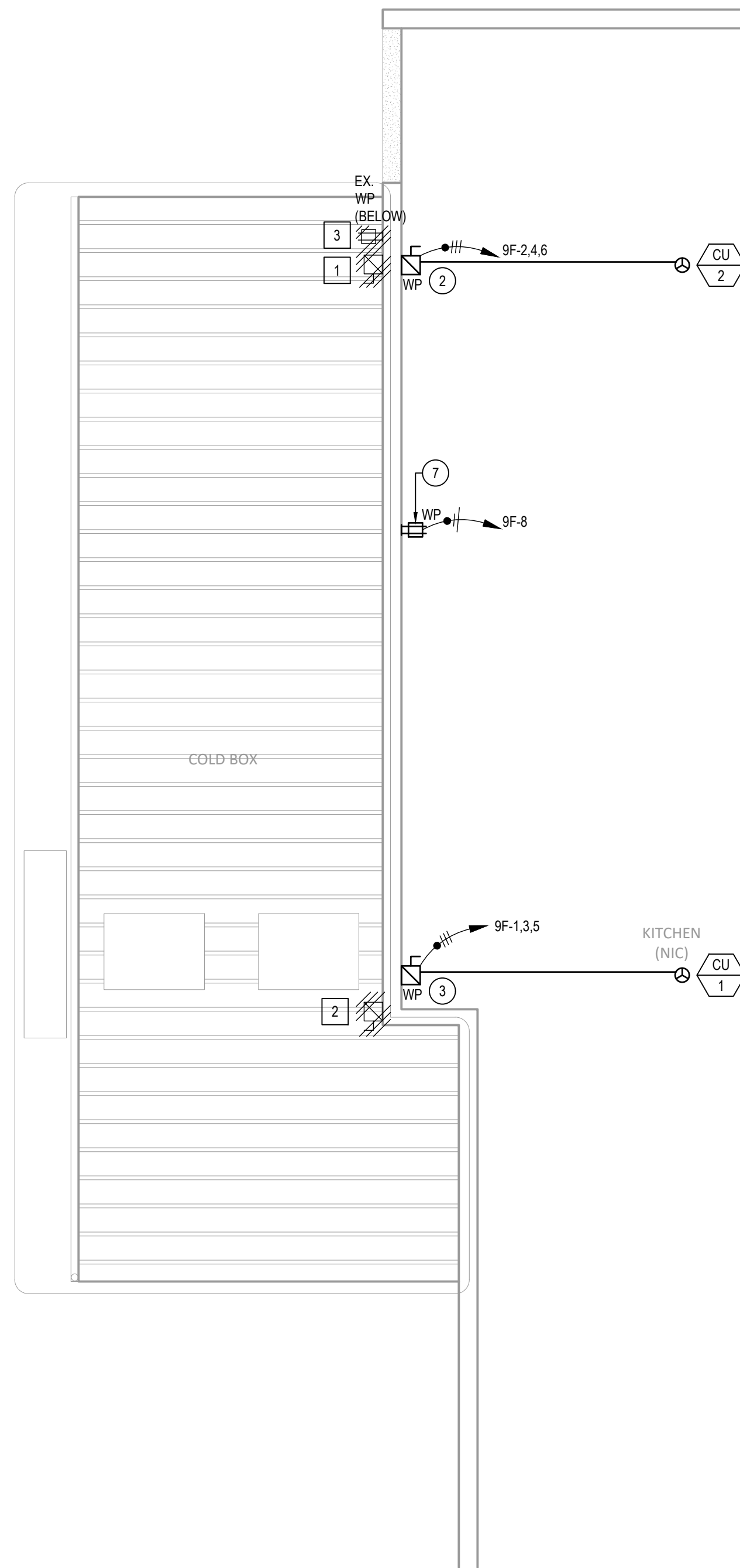
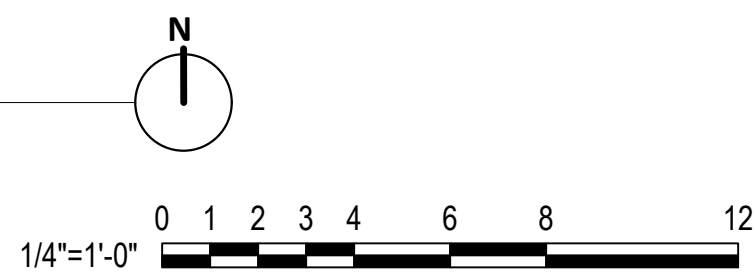


1 ENLARGED LIGHTING PLAN
1/4" = 1'-0"



2 ENLARGED ROOF PLAN
1/4" = 1'-0"



GENERAL NOTES

1. SEE SHEET E0.2 FOR GENERAL NOTES.

DEMOLITION KEYNOTES

- 1 CONTRACTOR SHALL TRACE AND IDENTIFY EXISTING BRANCH CIRCUIT SERVING EXISTING DISCONNECT FOR FREEZER. DISCONNECT AND REMOVE EXISTING BRANCH CIRCUIT SERVING DISCONNECT FOR FREEZER. DISCONNECT AND REMOVE EXISTING FREEZER DISCONNECT. CONDUIT IN WALLS, BELOW SLAB OR ABOVE CEILINGS SHALL BE CAPPED AND ABANDONED IN PLACE.
- 2 CONTRACTOR SHALL TRACE AND IDENTIFY EXISTING BRANCH CIRCUIT SERVING EXISTING DISCONNECT FOR COOLER. DISCONNECT AND REMOVE EXISTING BRANCH CIRCUIT SERVING DISCONNECT FOR COOLER. DISCONNECT AND REMOVE EXISTING COOLER DISCONNECT. CONDUIT IN WALLS, BELOW SLAB OR ABOVE CEILINGS SHALL BE CAPPED AND ABANDONED IN PLACE.
- 3 CONTRACTOR SHALL TRACE AND IDENTIFY EXISTING BRANCH CIRCUIT SERVING EXISTING WEATHERPROOF RECEPTACLE ON THE ROOF. DISCONNECT AND REMOVE EXISTING BRANCH CIRCUIT SERVING ROOF RECEPTACLE. PRESERVE CONTINUITY TO ANY OTHER DEVICES ON THIS BRANCH CIRCUIT. DISCONNECT AND REMOVE EXISTING WEATHERPROOF RECEPTACLE TO BE SALVAGED AND REINSTALLED. CONDUIT IN WALLS, BELOW SLAB OR ABOVE CEILINGS SHALL BE CAPPED AND ABANDONED IN PLACE.

KEYNOTES

- 1 INTERCEPT AND EXTEND EXISTING CONDUITS AND CONDUCTORS AS NEEDED FOR POWER CONNECTION TO SALVAGED LIGHT FIXTURE TO BE REINSTALLED. CONTRACTOR SHALL FIELD VERIFY EXISTING CONDITIONS PRIOR TO ROUGH-IN.
- 2 PROVIDE AND INSTALL 30AS/20AF/3P FUSED DISCONNECT SWITCH FOR POWER CONNECTION TO NEW FREEZER EQUIPMENT. CONTRACTOR TO VERIFY CONDENSING UNIT MCA / FLA WITH MANUFACTURER SHOP DRAWINGS PRIOR TO INSTALLING. COORDINATE FINAL DISCONNECT, FUSE, AND FEEDER SIZE REQUIREMENTS WITH MANUFACTURER SHOP DRAWINGS.
- 3 PROVIDE AND INSTALL 60AS/45AF/3P FUSED DISCONNECT SWITCH FOR POWER CONNECTION TO NEW COOLER EQUIPMENT. CONTRACTOR TO VERIFY CONDENSING UNIT MCA / FLA WITH MANUFACTURER SHOP DRAWINGS PRIOR TO INSTALLING. COORDINATE FINAL DISCONNECT, FUSE, AND FEEDER SIZE REQUIREMENTS WITH MANUFACTURER SHOP DRAWINGS.
- 4 PROVIDE AND INSTALL JUNCTION BOX FOR POWER CONNECTION TO LIGHTING FOR NEW FREEZER. COORDINATE UNIT FEED LOCATION WITH MANUFACTURER SHOP DRAWINGS.
- 5 PROVIDE AND INSTALL JUNCTION BOX FOR POWER CONNECTION TO LIGHTING FOR NEW COOLER. COORDINATE UNIT FEED LOCATION WITH MANUFACTURER SHOP DRAWINGS. ROUTE CIRCUIT THROUGH EXISTING TOGGLE SWITCH PROTECTED IN PLACE FOR LOCAL CONTROL OF LIGHTING.
- 6 INTERCEPT AND EXTEND EXISTING CONDUITS AND CONDUCTORS AS NEEDED FOR POWER CONNECTION TO SALVAGED TOGGLE SWITCH TO BE REINSTALLED FOR LOCAL CONTROL OF LIGHTING. CONTRACTOR SHALL FIELD VERIFY EXISTING CONDITIONS PRIOR TO ROUGH-IN.
- 7 INTERCEPT AND EXTEND EXISTING CONDUITS AND CONDUCTORS AS NEEDED FOR POWER CONNECTION TO SALVAGED WEATHERPROOF RECEPTACLE TO BE REINSTALLED ON THE ROOF. CONTRACTOR SHALL FIELD VERIFY EXISTING CONDITIONS PRIOR TO ROUGH-IN.

ENLARGED PLANS

SAN DIEGO UNIFIED SCHOOL DISTRICT
KITCHEN MODIFICATIONS GROUP 6
BELL MIDDLE SCHOOL
620 BRIARWOOD RD.
SAN DIEGO, CA 92139
BID SET

PREPARED FOR THE
BOARD OF EDUCATION

PREPARED BY THE
obr/ARCHITECTURE
2419 EL CAJON BLVD, SAN DIEGO, CA 92104

PROJECT NO. SDUF-002

DATE 04/12/25

REVISIONS

SHEET NO.

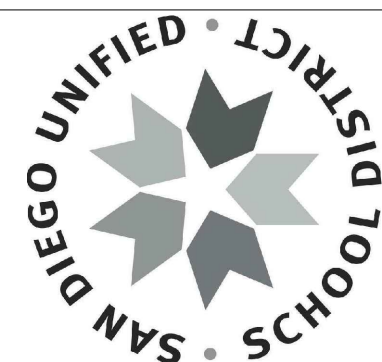
E4.1

COFFMAN ENGINEERS
1455 Frazee Rd., Suite 600
San Diego, CA 92108
ph 619.232.4673
www.coffman.com

FOR DSA REVIEW ONLY -
NOT FOR CONSTRUCTION



obr
ARCHITECTURAL ART DIVISION



DSA
CONSULTANT
CONSULTANT
ARCHITECT/CONSULTANT